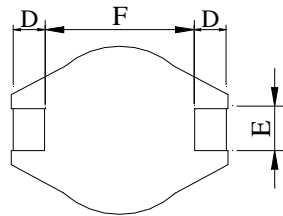
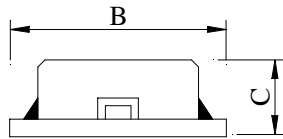
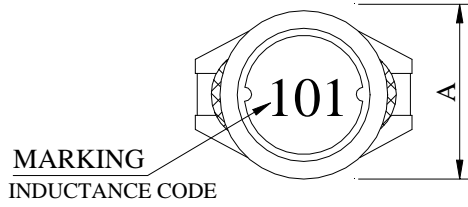


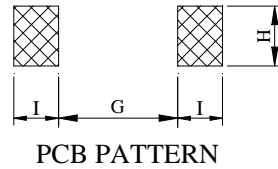
# PRODUCT SPECIFICATION

Product Name	3316 SMD POWER INDUCTORS - SHIELDED TYPE	Page	1
TAMURA Part No.	TS3316-XXX	Rev. No.	0

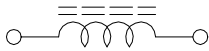
## 1. CONFIGURATION & DIMENSIONS :



A	: 10.0±0.2	m/m
B	: 12.7±0.2	m/m
C	: 4.9±0.3	m/m
D	: 2.4±0.2	m/m
E	: 2.2±0.2	m/m
F	: 7.6±0.3	m/m
G	: 7.3 REF.	m/m
H	: 2.8 REF.	m/m
I	: 3.0 REF.	m/m



## 2. SCHEMATIC DIAGRAM :



## 3. GENERAL SPECIFICATION :

- a) TEMP. RISE : 40°C MAX.
- b) RATED CURRENT : BASE ON TEMP. RISE &  $\Delta L / LOA=10\%$  MAX.
- c) STORAGE TEMP. : -40°C ----+105°C
- d) OPERATING TEMP. : -25°C----+85°C
- e) RESISTANCE TO SOLDER HEAT : 260°C FOR 10 SECS.

# PRODUCT SPECIFICATION

Product Name	3316 SMD POWER INDUCTORS - SHIELDED TYPE	Page	2
TAMURA Part No.	TS3316-XXX	Rev. No.	0

## 4. ELECTRICAL CHARACTERISTICS :

TAMURA Part No.	INDUCTANCE ( $\mu$ H)	Q REF.	TEST FREQ. ( HZ )		SRF ( MHz ) TYP.	RDC ( mOhm ) MAX	IDC ( A )
			L	Q			
TS3316-1R0M	1.0 $\pm$ 20%	50	100K		130.0	21	5.00
TS3316-1R5M	1.5 $\pm$ 20%	60	100K		110.0	22	4.50
TS3316-2R2M	2.2 $\pm$ 20%	70	100K		90.0	27	3.80
TS3316-3R3M	3.3 $\pm$ 20%	70	100K		70.0	39	3.30
TS3316-4R7M	4.7 $\pm$ 20%	70	100K		50.0	40	2.70
TS3316-6R8M	6.8 $\pm$ 20%	70	100K		30.0	55	2.20
TS3316-100M	10.0 $\pm$ 20%	60	100K		28.0	65	1.50
TS3316-150M	15.0 $\pm$ 20%	60	100K		20.0	85	1.50
TS3316-220M	22.0 $\pm$ 20%	50	100K		19.0	207	1.30
TS3316-330M	33.0 $\pm$ 20%	70	100K		15.0	334	1.10
TS3316-470M	47.0 $\pm$ 20%	70	100K		13.0	472	0.80

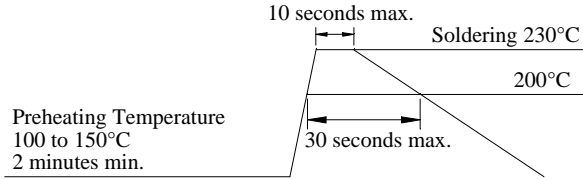


TAMURA

# PRODUCT SPECIFICATION

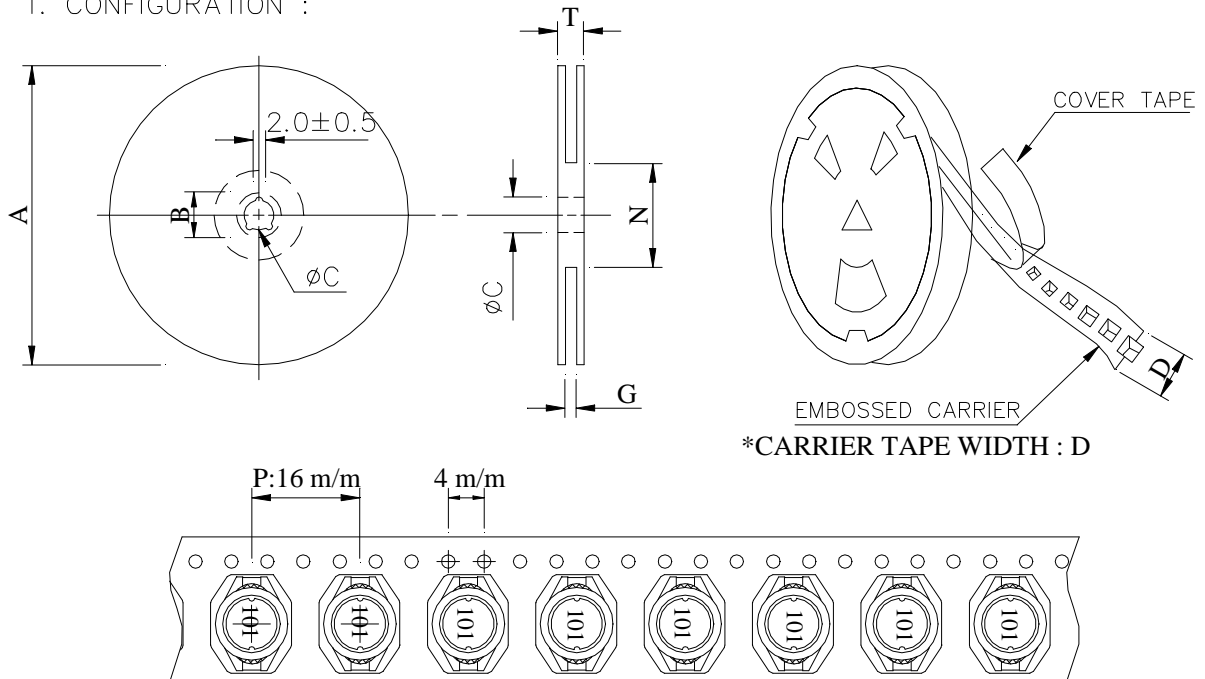
Product Name	3316 SMD POWER INDUCTORS - SHIELDED TYPE	Page	3
TAMURA Part No.	TS3316-XXX	Rev. No.	0

### RECOMMENDED SOLDERING CONDITIONS REFLOW SOLDERINGS



## 5. PACKAGING INFORMATION :

### 1. CONFIGURATION :



### ( 2 ) DIMENSIONS

Unit:m/m

STYLE	A	B	C	D	G	N	T
13 - 24	330	21±0.8	13	24	26 MAX	50 MIN	30.4

### ( 3 ) Q'TY & G.W. PER PACKAGE

SERIES	INNER : REEL			OUTER : CARTON		
	Q'TY (PCS)	G.W. (gw)	STYLE	Q'TY (PCS)	G.W. (Kg)	SIZE (cm)
TS3316	500	1000	13 - 24	1000	2	40 x 40 x 24

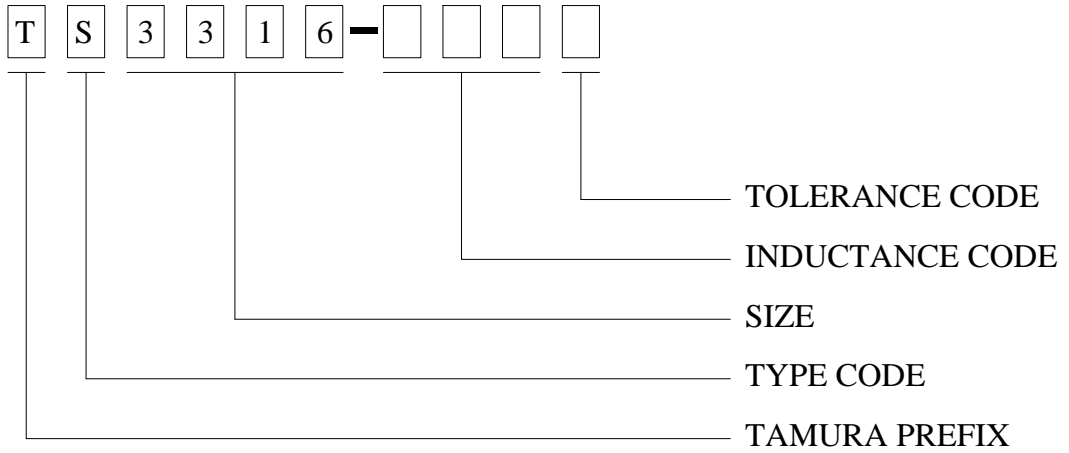


TAMURA

# PRODUCT SPECIFICATION

Product Name	3316 SMD POWER INDUCTORS - SHIELDED TYPE	Page	4
TAMURA Part No.	TS3316-XXX	Rev. No.	0

## 6. Part No. FORMAT :



TAMURA

# PRODUCT SPECIFICATION

Product Name	3316 SMD POWER INDUCTORS - SHIELDED TYPE	Page	5
TAMURA Part No.	TS3316-XXX	Rev. No.	0

## 7. RELIABILITY TEST :

TEST ITEM	SPECIFICATION	TEST CONDITION
SOLDERABILITY	MORE THAN 90% OF THE TERMINAL ELECTRODE SHALL BE COVERED WITH FRESH SOLDER.	PREHEAT : $125\pm 25^{\circ}\text{C}$ FOR 60 SECONDS SOLDER : H63A ( EUTECTIC SOLDER ) SOLDER TEMP. : $230\pm 5^{\circ}\text{C}$ FLUX : ROSIN DIP TIME : $4\pm 1$ SECONDS
THERMAL SHOCK TEST  ( TEMP. CYCLE )	INDUCTANCE SHALL NOT CHANGE MORE THAN $\pm 20\%$	ROOM TEMP. $\longrightarrow$ $-25\pm 2^{\circ}\text{C}$ 15 MINUTES $\longrightarrow$ 30 MINUTES  ROOM TEMP. $\longrightarrow$ $85\pm 2^{\circ}\text{C}$ 15 MINUTES $\longrightarrow$ 30 MINUTES  TOTAL : 50 CYCLES
HUMIDITY RESISTANCE TEST		TEMPERATURE : $40\pm 2^{\circ}\text{C}$ HUMIDITY : 90 ~ 95% APPLIED CURRENT : PER SPEC. TIME : 500 HOURS
HIGH TEMP. RESISTANCE TEST		TEMPERATURE : $85\pm 2^{\circ}\text{C}$ APPLIED CURRENT : PER SPEC. TIME : 500 HOURS